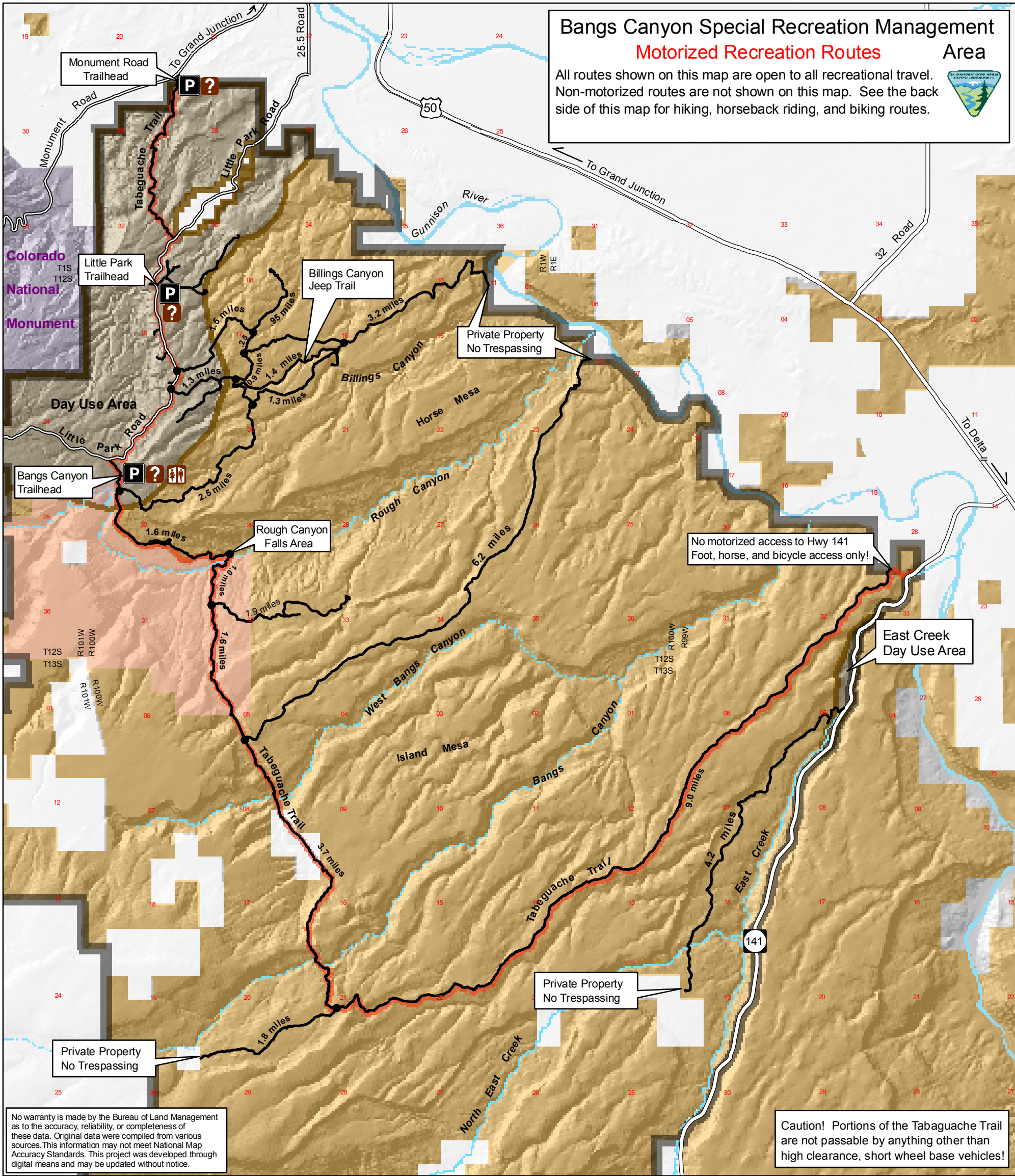


Bangs Canyon Special Recreation Management Area

Motorized Recreation Routes



All routes shown on this map are open to all recreational travel. Non-motorized routes are not shown on this map. See the back side of this map for hiking, horseback riding, and biking routes.



No warranty is made by the Bureau of Land Management as to the accuracy, reliability, or completeness of these data. Original data were compiled from various sources. This information may not meet National Map Accuracy Standards. This project was developed through digital means and may be updated without notice.

No motorized access to Hwy 141 Foot, horse, and bicycle access only!

East Creek Day Use Area

Private Property No Trespassing

Private Property No Trespassing

Caution! Portions of the Tabaguache Trail are not passable by anything other than high clearance, short wheel base vehicles!

Land Status:

- BLM
- National Park Service
- Private
- Rough Canyon ACEC
- Boundary of the Bangs Canyon Special Recreation Management Area
- Restricted Areas!**
No overnight camping
No open fires
No shooting
- Parking Area/Trailhead
- Information Board
- Restroom

For more information contact:
BLM Grand Junction Field Office
2815 H road
Grand Junction, CO 81506
970-244-3000

Transportation Opportunities:

Transportation in the Bangs Canyon Special Recreation Management Area is limited to DESIGNATED roads and trails.

Open routes are marked with a white arrow.

Routes with restrictions on use are posted with symbols representing the use that is allowed on that route.

Examples:

<p>Open to: Marks a route open to all uses</p> <p>Closed to: </p>	<p>Open to: Marks a route open to hikers, horseback riders, bicycles, and motorcycles.</p> <p>Closed to: </p>	<p>Open to: Marks a route that is open to hiking.</p> <p>Closed to: </p>
--	---	---

Transportation Symbols:

- U.S. and State Highways
- County Roads
- BLM Roads
- Tabaguache Trail
- Full-sized vehicle
- ATV
- Motorcycle
- Bicycle
- Horseback
- Hiking
- mileage markers



Directions:

From Grand Junction, go west on Grand Avenue, cross two bridges, at the next stop light turn left onto Monument Road, heading toward the Colorado National Monument. Turn left onto D Road until you come to the No Outlet sign, turn right, you are now on Little Park Road. At mile 7.7 turn left onto a dirt road leading to the Bangs Canyon trailhead.

If a route is not marked as open for a specific use, it is closed!